

# STREAMLINE WORKFLOWS

---

How K-TRACS Integration Removes Barriers  
and Creates Clinical Efficiencies

**A BEST PRACTICES WHITEPAPER**



K-TRACS integrated system users experience fewer workflow interruptions and use the system more frequently than web portal users.

**Integration makes using K-TRACS convenient and easy**, with patient prescription drug history accessible within the patient records in your electronic medical records (EMR) or pharmacy management system.

## REDUCE WORKFLOW INTERRUPTIONS

With an integrated system, you will no longer have to use separate systems to access patient prescription drug history. Integration makes it easier to pull up a patient's K-TRACS record and discuss it with them during an encounter.

**Real-time data is available within the patient's EMR or pharmacy record**, including a list of past prescriptions, prescribers and pharmacies used by the patient — similar to the history in you find in the web portal.



Integrated users save an average of 4 minutes per patient lookup

*Source: Society for Academic Emergency Medicine  
<https://onlinelibrary.wiley.com/doi/full/10.1111/acem.12905>*

## INTEGRATION FEATURES



Streamline clinical workflows by making patient prescription drug data available within your records system



Search neighboring state PDMPs including Missouri, Colorado and Oklahoma

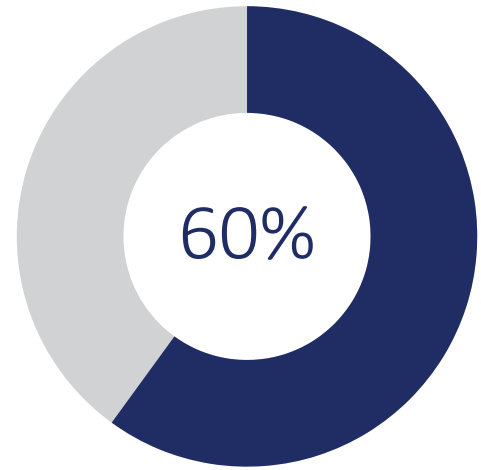


See real-time data with one click

# INCREASE FREQUENCY OF USE

There is a positive correlation between the use of integrated systems and higher frequencies of use among K-TRACS pharmacists and prescribers. **Approximately 60% of integrated users report checking K-TRACS daily, compared to just 36% of all users.**

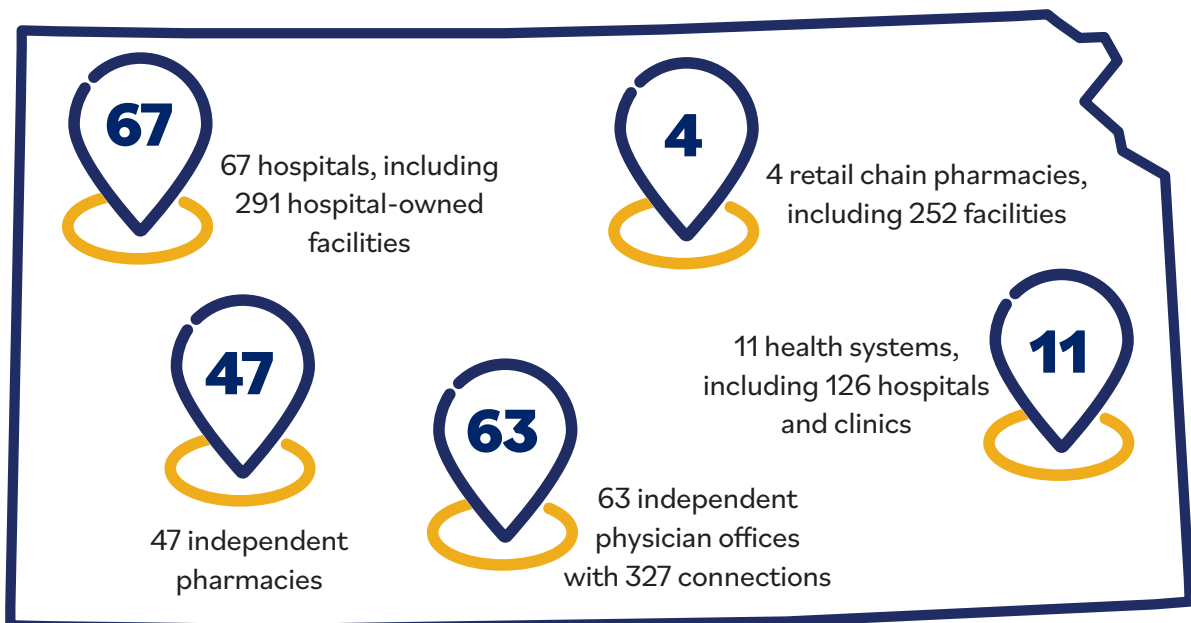
Though cause and effect related to frequency of use and integration status is unclear, more frequent use of K-TRACS can result in greater prevention of prescription drug misuse, abuse and diversion.



K-TRACS has become an extremely valuable tool over the past year since we got it integrated into our EMR. Previously, I checked it on new patients and ‘problem’ patients, but now **I can easily check it on every script for a controlled substance.**”

*Jerry Old, MD,  
Community Health Center  
in Cowley County*

## WHO USES INTEGRATION?



# INTEGRATION COSTS & ELIGIBILITY

K-TRACS currently does not charge entities for integration. However, you may incur integration costs from your records system vendor to facilitate the process.

The K-TRACS software vendor will work directly with your organization and EMR/PMS software vendor to communicate specific needs, including what version of software is compatible with the integration. Any upgrades, including associated costs, to your EMR/PMS necessary to complete the integration are your responsibility.

## INTEGRATION FUNCTIONALITY

- Patient demographics
- Prescriber and pharmacy usage history
- Risk indicator scores and overdose risk scores for specific patients
- Ability to search neighboring states through interstate data sharing (connected states shown at right)



If your organization implements integration, all users will still be able to access the K-TRACS web portal for these additional features, and prescribers, in particular, are encouraged to maintain a web portal account to continue to view My Rx and be eligible to receive the quarterly Prescriber E-Recap. Features only available in the web portal:

- Delegate access to conduct K-TRACS searches: Even if your organization implements integration, delegates will still need to use the web portal
- Partial name search
- Searches that return multiple records
- My Rx (prescribing history)
- Search history (including delegate search history)
- Bulk patient search
- Delegate management
- User profile
- Some interstate data sharing options (neighboring states are included in integration)
- Announcements
- Patient alerts

# REQUEST AN INTEGRATION

Take the first step toward integration by completing the Integration Request Form available on the K-TRACS website or at the link below:

[https://info.apprisshealth.com/  
ktracsgatewayintegrationrequest](https://info.apprisshealth.com/ktracsgatewayintegrationrequest) 

The Kansas Board of Pharmacy will notify you when the request is approved, and you will be provided a set of Terms and Conditions that require your signature to finalize your request.

An Appriss Health project manager will contact you to confirm details of your request and to discuss next steps.

Many EMR/PMS software vendors have completed the integration development work to deliver PDMP data within the clinical workflow. Appriss Health will discuss specific needs with your vendor to determine viability of the project.